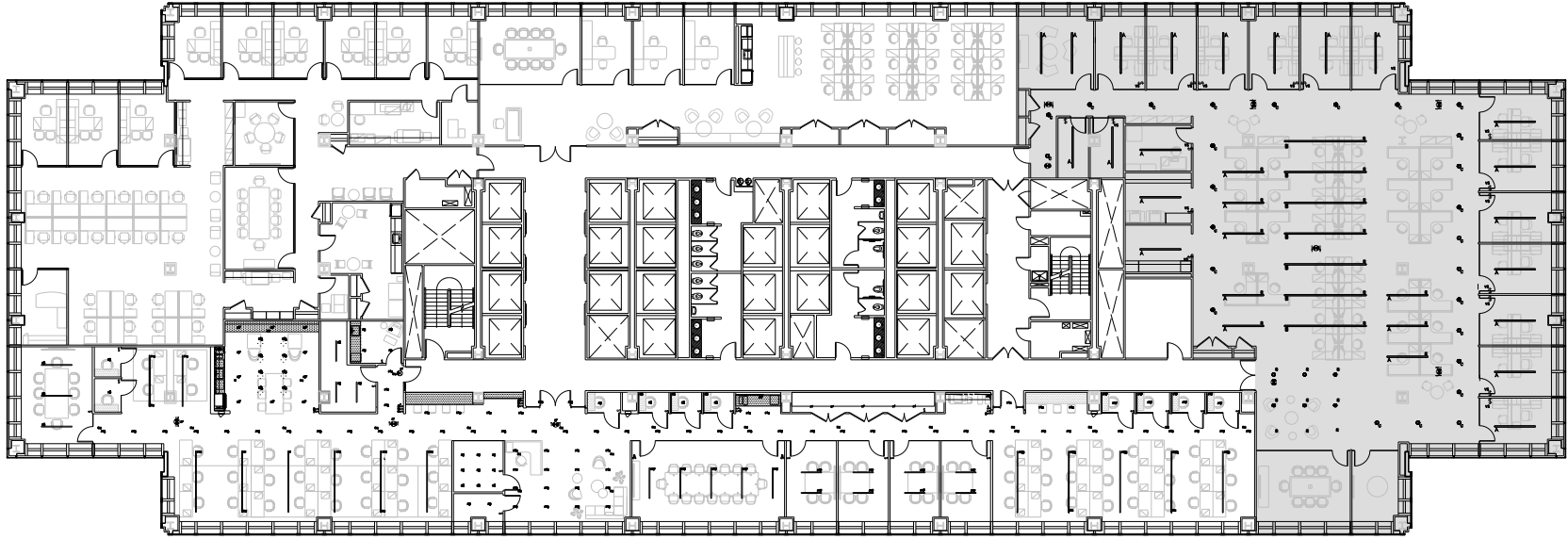


PENN 1

Partial 32nd Floor - 12,142 RSF



Symbol	Specifications	Symbol
○	<p>NEW RECESSED LED DOWN LIGHT P/N: LIGHTSUN-17542424 4" APERTURE, 3 1/4" HIGH LAMP: 3000K - LED PROVIDE WITH LIGHTING INVERTER AS REQUIRED FOR DIM FUNCTION. SEE ENGINEERING PLANS FOR MORE INFORMATION.</p>	
—	<p>NEW 8'-0" RECESSED LINEAR - LED P/N: MICROMOR LINEAR (ITEM: JAK-LED-215-VTA-8L-30-8-FW-2X-88-400-00) FOR DIMMING FUNCTION (ONLY) SIZE: 8'-0" LENGTH LAMP: LED COLOR: 3000 K</p>	
—	<p>NEW 10'-0" RECESSED LINEAR - LED P/N: MICROMOR LINEAR (ITEM: JAK-LED-215-VTA-8L-30-10-FW-2X-88-400-00) FOR DIMMING FUNCTION (ONLY) SIZE: 10'-0" LENGTH LAMP: LED COLOR: 3000 K</p>	
☒	<p>EXIT LIGHT - LED BROADLY EXIT MARATHON SERIES. SELF POWERED. STEEL HOUSING. SINGLE FACED. 6" HIGH LETTERS. SEE ON CLEAR PANEL. COLOR: WHITE TRIM PANEL, LEFT OR RIGHT ARROW. P/N: ELITE (ITEM: SCIRCHWAL LEFT ARROW) (ITEM: SCIRCHWAL RIGHT ARROW) ARROW INDICATED DIRECTION</p>	

Leasing Contacts:

Josh Glick 212.894.7413 jglick@vno.com	Jared Silverman 212.894.7458 jsilverman@vno.com	Anthony Cugini 212.894.7425 acugini@vno.com	Jordan Donohue 212.894.7456 jdonohue@vno.com
--	---	---	--