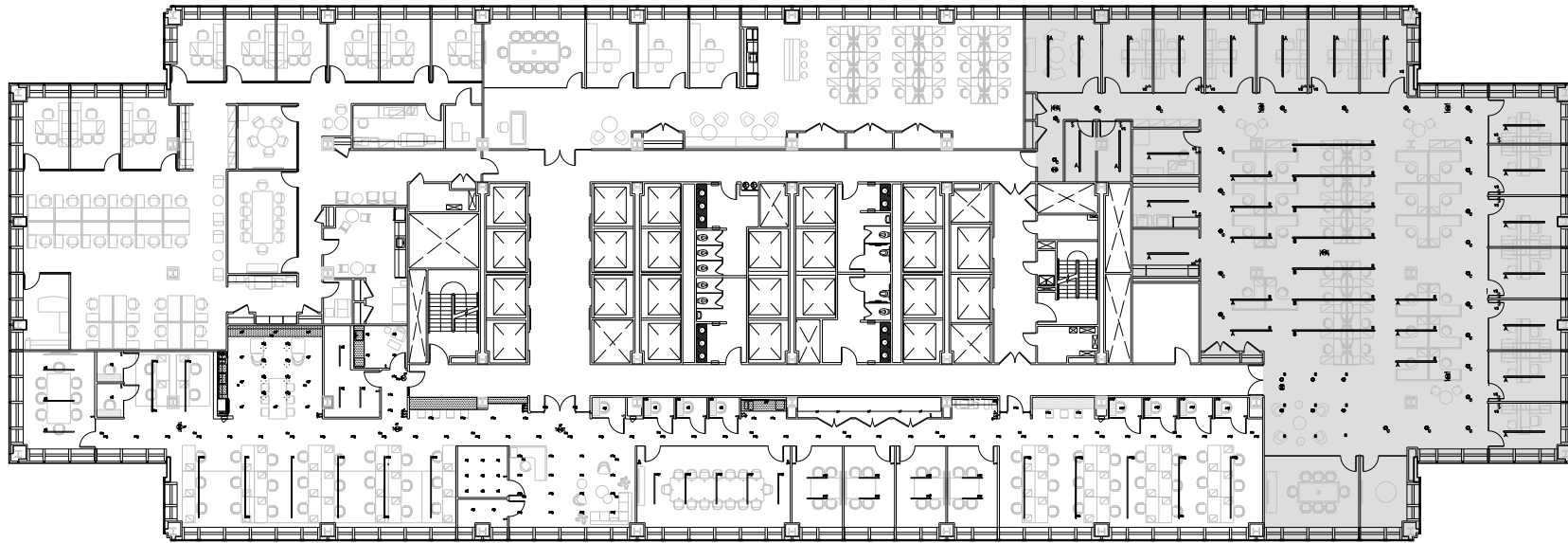


PENN 1

- 12,142 RSF



| Symbol | Specifications | Symbol |
|--------|---|--------|
| ○ | NEW RECESSED LED DOWN LIGHT P/N: LIGHTSUN-17542424 4" APERTURE, 3 1/4" HIGH LAMP: 3000K - LED PROVIDE WITH LIGHTING INVERTER AS REQUIRED FOR DIM FUNCTIONS. SEE ENGINEERING PLANS FOR MORE INFORMATION. | |
| — | NEW 8'-0" RECESSED LINEAR - LED P/N: MICROMOR LINEAR ITEM: JAK-LED-215-VTA-8L-30-8-FW-2X-88-4W-8W FOR DIMENSIONAL FITURES ONLY SIZE: 8'-0" LENGTH LAMP: LED COLOR: 3000 K | |
| — | NEW 16'-0" RECESSED LINEAR - LED P/N: MICROMOR LINEAR ITEM: JAK-LED-215-VTA-8L-30-16-FW-2X-88-4W-8W FOR DIMENSIONAL FITURES ONLY SIZE: 16'-0" LENGTH LAMP: LED COLOR: 3000 K | |
| ☒ | EXIT LIGHT - LED BROADLY EXIT MARATHON SERIES. SELF POWERED. STEEL HOUSING. SINGLE FACED. 6" HIGH LETTERS. SEE ON CLEAR PANEL. COLOR: WHITE TRIM FINISH. LEFT OR RIGHT ARROW P/N: ELITE ITEM: SCIRCHWAL LEFT ARROW ITEM: SCIRCHWAL RIGHT ARROW ARROW INDICATED DIRECTION | |

Leasing Contacts:

| | | | |
|----------------|--------------------|-----------------|------------------|
| Josh Glick | Jared Silverman | Anthony Cugini | Jordan Donohue |
| 212.894.7413 | 212.894.7458 | 212.894.7425 | 212.894.7456 |
| jglick@vno.com | jsilverman@vno.com | acugini@vno.com | jdonohue@vno.com |